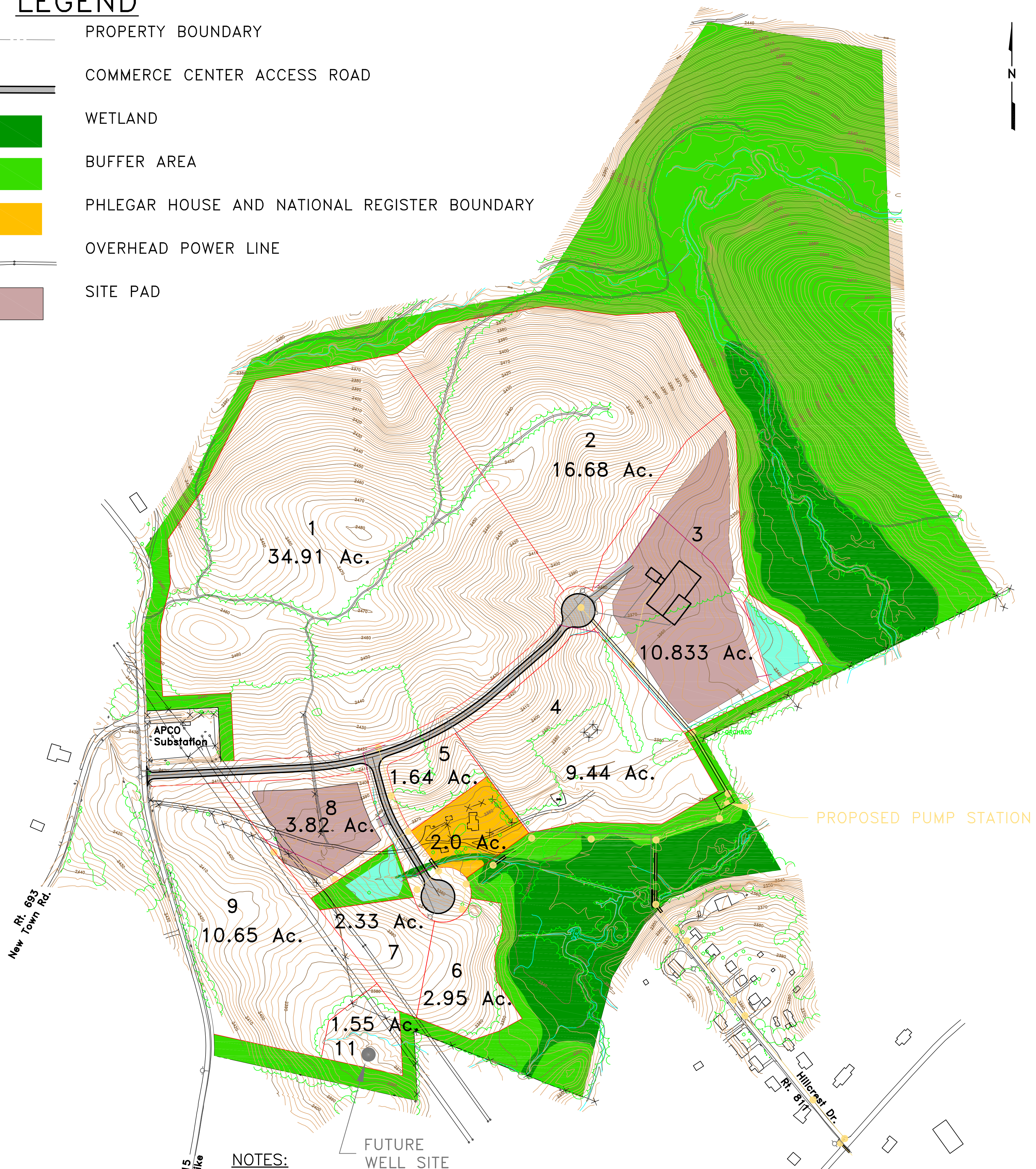


LEGEND

- PROPERTY BOUNDARY
- COMMERCE CENTER ACCESS ROAD
- WETLAND
- BUFFER AREA
- PHLEGAR HOUSE AND NATIONAL REGISTER BOUNDARY
- OVERHEAD POWER LINE
- SITE PAD



NOTES:

1. LOTS 1, 2, 3, AND 6 WILL REQUIRE INDIVIDUAL STORMWATER MANAGEMENT SYSTEMS.
2. LOTS 5, 7, 8, AND 9 MAY DIRECT STORMWATER TO THE DETENTION BASIN BETWEEN LOTS 7 AND 8.
3. DRAINAGE DITCHES SHALL BE PLACED ALONG THE EDGE OF THE COMMERCE CENTER ACCESS ROADS.

UTILITIES LEGEND

- 8" WASTEWATER GRAVITY LINE
- MANHOLE
- 8" WASTEWATER FORCE MAIN
- 8" WATER LINE
- HYDRANT

STORMWATER LEGEND

- STORMWATER DETENTION BASIN
- DRAINAGE DITCH
- CULVERT

